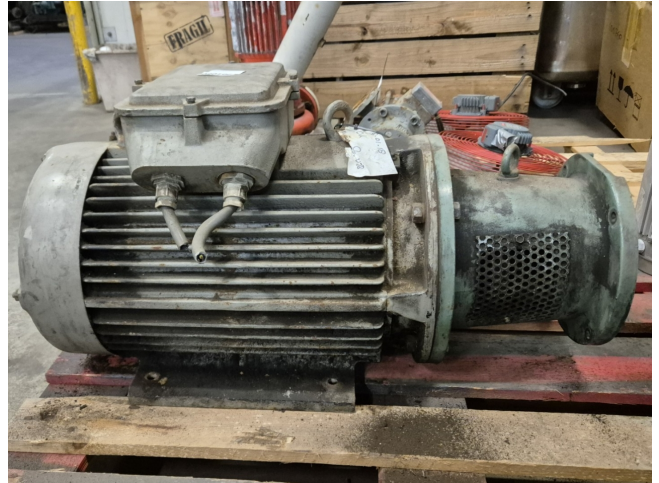


# Rotor XKF180L04 808X

## Specifications

Brand	Rotor
Type	XKF180L04 808X
kW	22
RPM	1460
Size & Weight	850x360x480 mm (LxWxH) & 210 kg
50 Hz / 60 Hz	50 Hz
Stock	1



## Description

### Used Rotor XKF180L04 808X

Used Rotor XKF180L04 808X electric motor with the following specifications:  
50 Hz - 22 kW - 1460 RPM.

